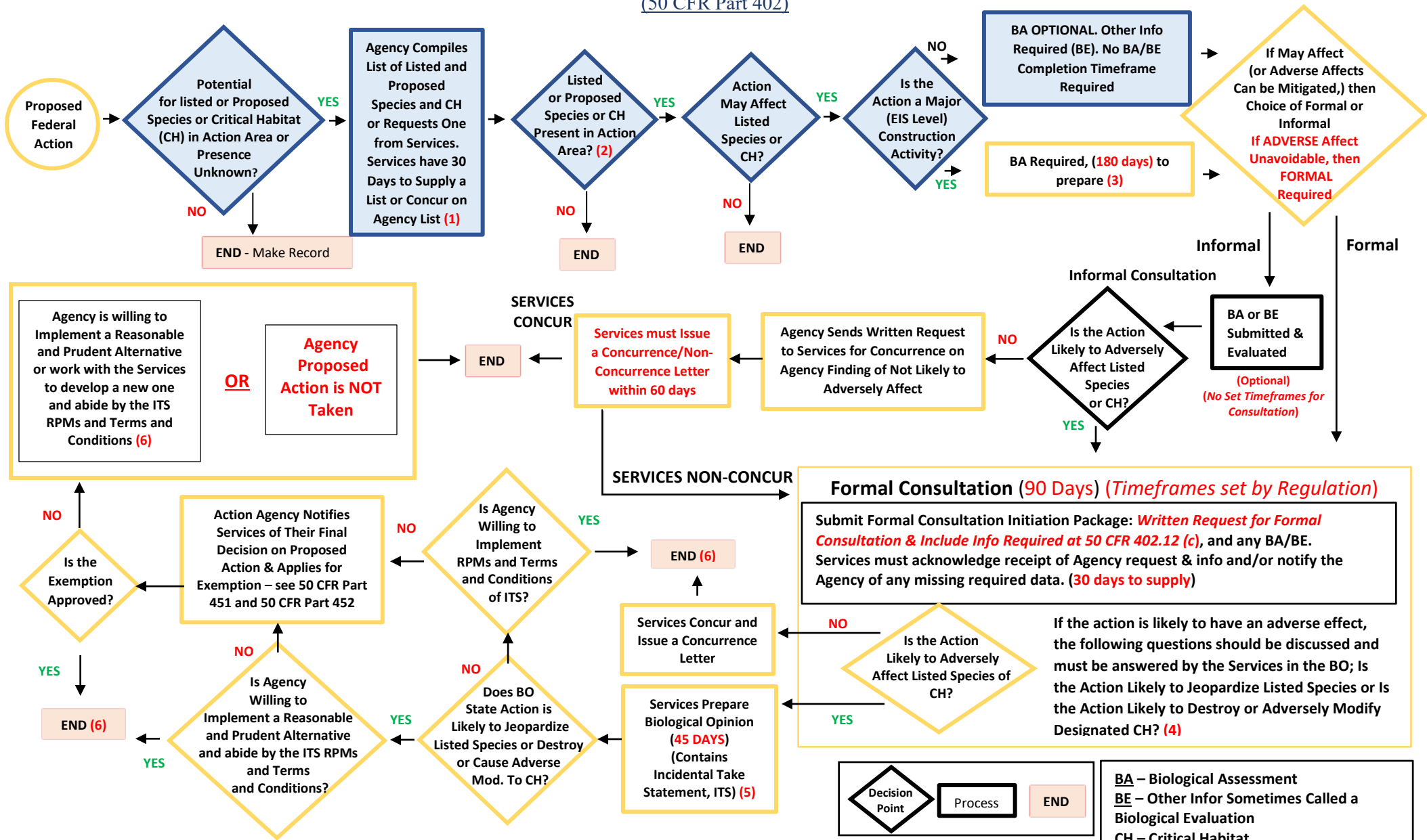


General ESA Section 7 Consultation Process

(50 CFR Part 402)



- (1) 30 Days is only REQUIRED for major construction activities.
- (2) If Proposed Species are likely to be jeopardized, follow 50 CFR Section 402.10 – **ESA conference is required.**
- (3) When a BA is required by regulation, the BA must be completed in 180 days unless Agency & Services agree to a different timeframe. Required BAs must be complete prior to entering any contract for construction and before construction is begun. The BA must contain information outlined in 402.14(c).
- (4) Once the Services receive a complete initiation package, they have 90 days to produce an answer unless and extension is mutually agreed per 402.14(e). **Action agency can request to see draft BO.**
- (5) Services have 45 days to produce any needed Biological Opinion.
- (6) **Monitor BO & Action.** Agency may have to reinstate consultation in future. See 50 CFR Part 402.15 on reasons to reinstate

BA – Biological Assessment
BE – Other Infor Sometimes Called a Biological Evaluation
CH – Critical Habitat
Services – NMFS and/or USFWS
EIS – Environmental Impact Statement – 40 CFR Part 1502
RPM – Reasonable & Prudent Measure

Darker Shading Means Request for Technical Assistance from Services May be Helpful.